

010

IDRIS COMBI

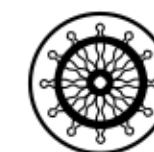


CARACTERÍSTICAS TÉCNICAS / TECHNICAL DETAILS

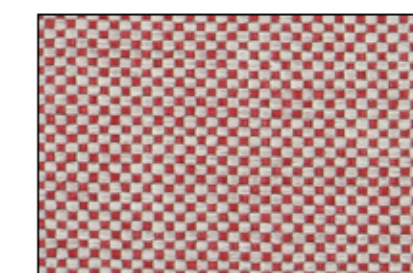
Composición / Composition	100% PP FR (nativa)	
Ancho / Width	140 cm. ±2%	
Peso / Weight	350 gr/m² ±5%	
Solidez del color a la luz artificial Colour fastness to artificial light	XENO ISO 105 B02	4-5
Solidez del color al frote Colour fastness to rubbing	CROCK METER ISO 105 X12	5 SECO - DRY 4/5 HÚMEDO - WET
Resistencia al pilling Pilling resistance	ISO 12945-2	4/5
Resistencia al deslizamiento de la costura Seam slippage	EN ISO 13936-2	1,50 mm.
Resistencia a la abrasión Abrasion resistance	MARTINDALE ISO 12947-2	≥ 50.000 CICLOS / RUBS
Resistente a Resistant to	Este hilo es: Repelente al agua - antiestático - hipoalergénico - antibacteriano - no encoge This yarn is: Water repellent - antistatic - hypoallergenic - antibacterial - no-shrink	
Símbolos de cuidado y limpieza / Care label	<p>Se aconseja lavado en seco Dry clean suggest</p>	
ATENCIÓN WARNING	Artículo no válido para exterior Not suitable for external/outdoor use	
Comportamiento frente al fuego / Fire retardant	ITALIA / ITALY EUROPA / EUROPE INGLATERRA / ENGLAND FRANCIA / FRANCE EE.UU. / U.S.A. NAUTICA / NAUTICAL	UNI 9175 Class 1IM EN 1021:2006-1 EN 1021:2006-2 BS 5852 IS 11 (CRIB 5) NF D 60-013:2006 (art. AM 18) California TB 117:2013 FTP Code 307(88): 10 Annex 1 Part 8

Estos valores se dan únicamente para información de buena fe y no pueden considerarse en ningún caso vinculantes. No se responde del uso inapropiado. **Se permiten ligeras diferencias de color entre diferentes lotes.** The overmentioned data correspond to average values communicated in good faith, but they cannot be considered as a contract document. The company is not responsible for any inappropriate use of the product. **Slight colour differences among several lots are admitted.**

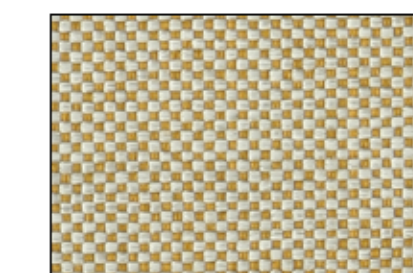
I D R I S C O M B I



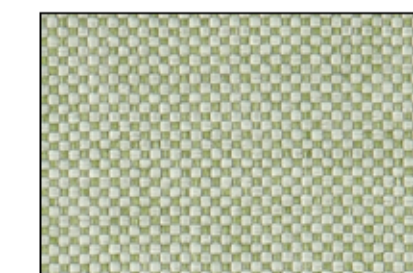
001



002



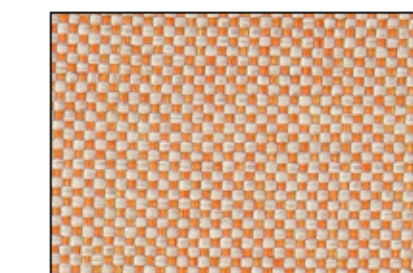
003



004



005



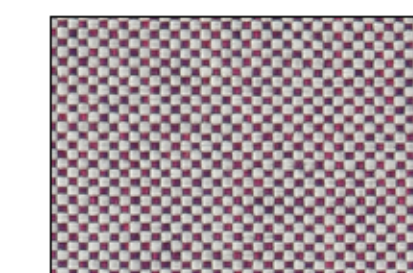
006



007



008



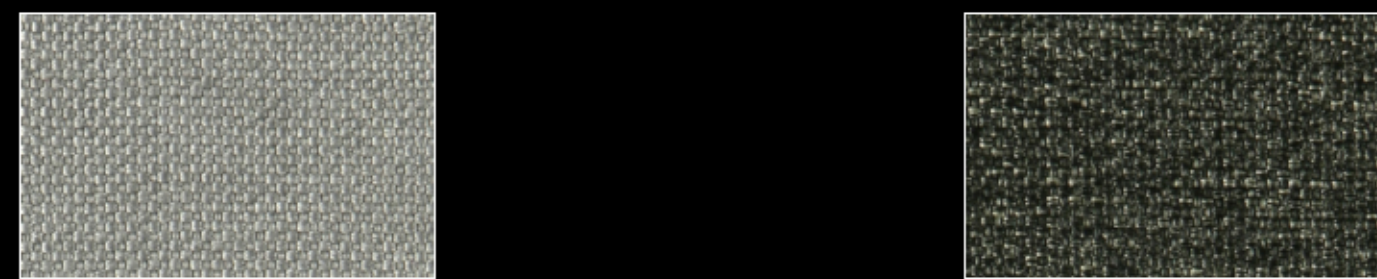
009

www.mfarrugia.com

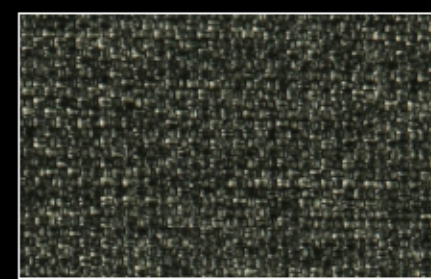
info@mfarrugia.com

+34 968 75 10 39 FAX +34 968 79 26 72

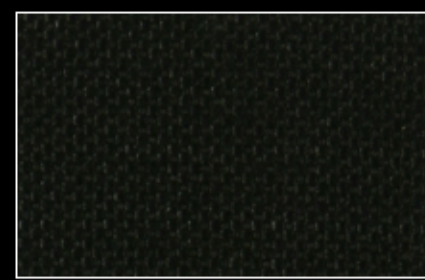
Polígono Industrial La Herrada C/ Príncipe de Asturias 41 Apartado 452 30510 Yecla Murcia Spain



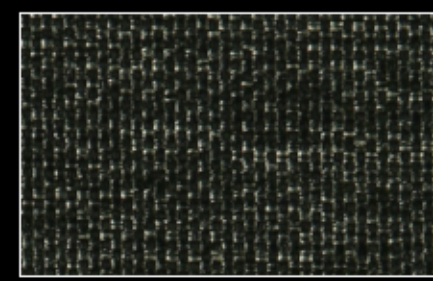
011



012



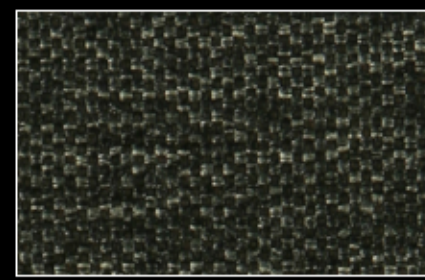
013



014



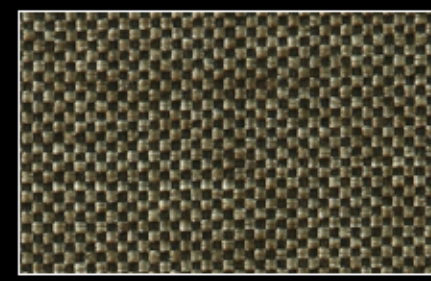
015



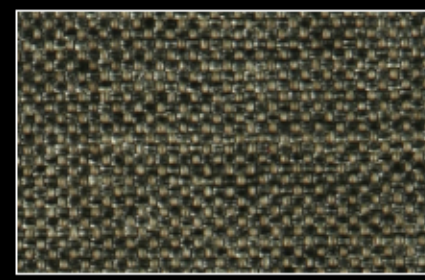
016



017



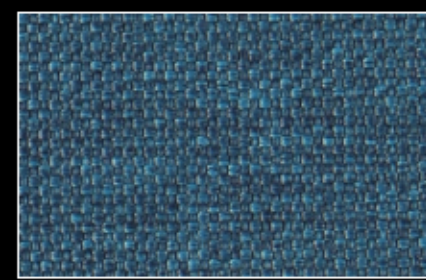
018



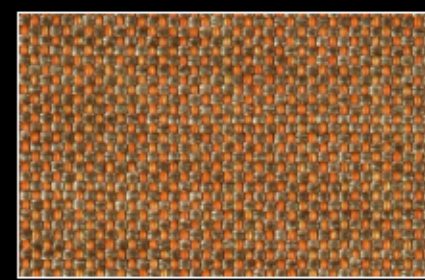
019



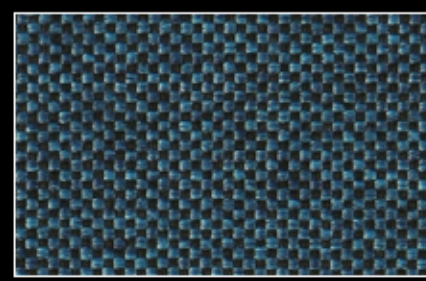
020



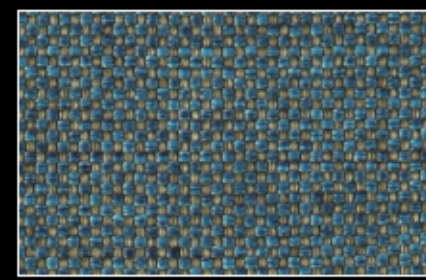
021



022



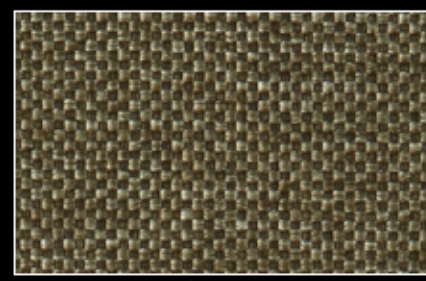
023



024



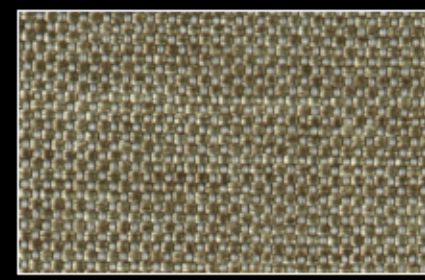
025



026



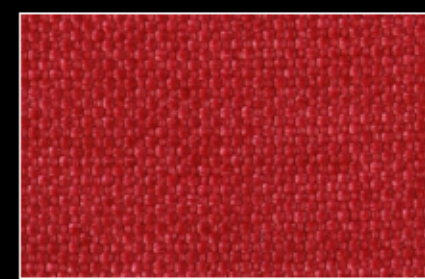
027



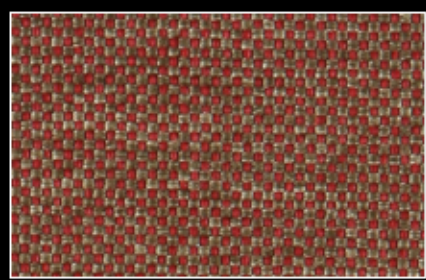
028



029



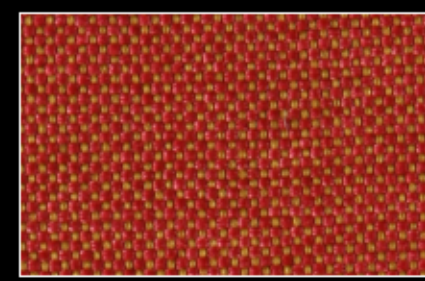
030



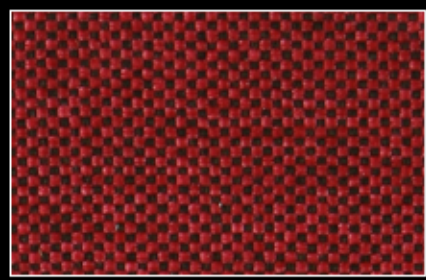
031



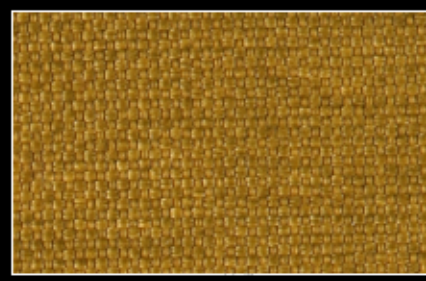
032



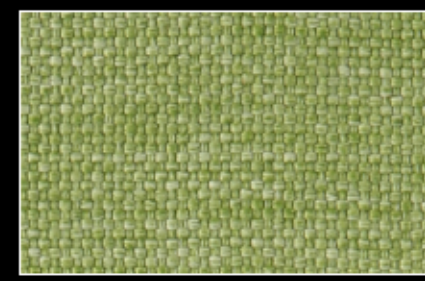
033



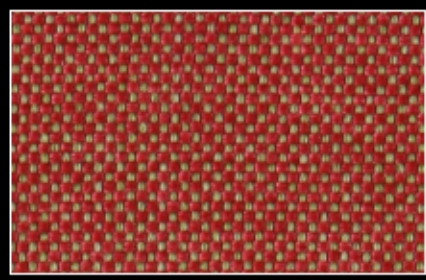
034



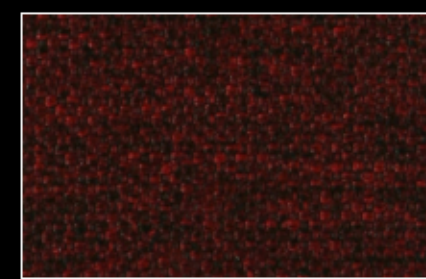
035



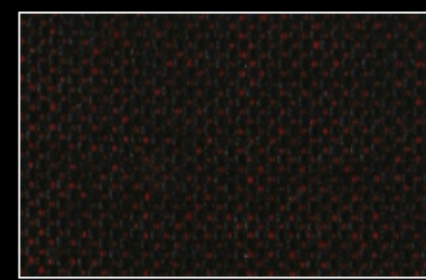
036



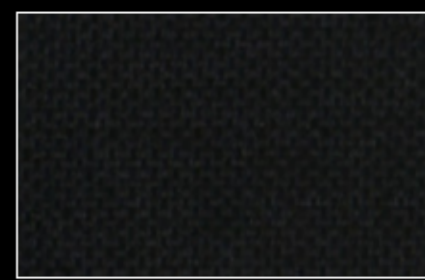
037



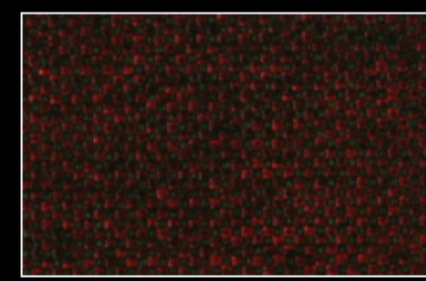
038



039



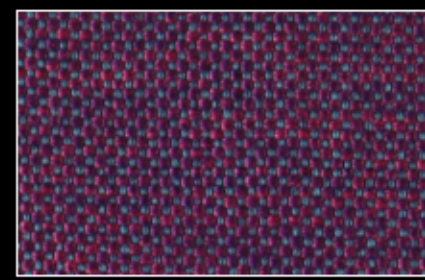
040



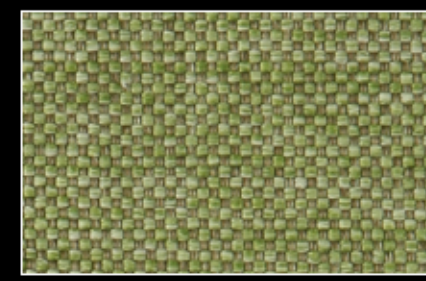
041



042



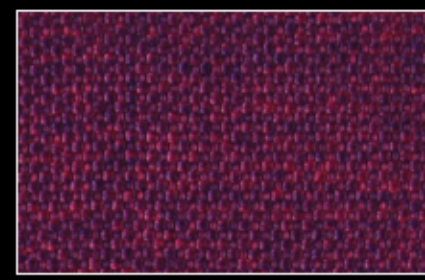
043



044



045



046