

MARIANO FARRUGIA  
T E S S U T I

SAN MARINO DIS. TOPOS



CARACTERÍSTICAS TÉCNICAS / TECHNICAL DETAILS

Composición / Composition		58% VI - 14% PL 28% Resina / Backing	
Ancho / Width		140 cm.	
Peso / Weight		406 gr/m <sup>2</sup> ±4% (+ 150 gr/m <sup>2</sup> resina)	
Información del diseño Pattern repeat		58,5 cm. URDIMBRE - WARP 70,5 cm. TRAMA - WEFT	
Resistencia a la tracción Tensile resistance	ISO 13934-2	1200 900	LARGO - LENGTH ANCHO - WIDTH
Resistencia al deslizamiento de la costura Seam slippage	BS 3320	> 200 > 200	LARGO - LENGTH ANCHO - WIDTH
Solidez del color al frote Colour fastness to rubbing	CROCK METER ISO 105 X12	4 3/4	SECO - DRY HÚMEDO - WET
Solidez del color a la luz artificial Colour fastness to artificial light	XENO ISO 105 B02	4/5	ESCALA DE AZULES / BLUE SCALE
Resistencia al pilling Pilling resistance	ISO 12945-2	4/5	
Resistencia a la abrasión Abrasion resistance	MARTINDALE ISO 12947-2	> 50.000	CICLOS / RUBS
Símbolos de cuidado y limpieza / Care label		<p>Lavar en seco - No centrifugar Dry clean only - Do not spin</p>	
Comportamiento frente al fuego / Fire retardant	ITALIA / ITALY EUROPA / EUROPE  INGLATERRA / ENGLAND  EE.UU. / U.S.A. NAUTICA / NAUTICAL	UNI 9175 Class 1IM EN 1021-1:2006 EN 1021-2:2006 BS 5852 IS 0 + 1 BS 5852 IS CRIB 5 California TB 117:2013 FTP Code 307(88):10 Annex 1 Part 8 ex. IMO res. A 652 (16)	

Estos valores se dan únicamente para información de buena fe y no pueden considerarse en ningún caso vinculantes. No se responde del uso inapropiado. **Se permiten ligeras diferencias de color entre diferentes lotes.** The overmentioned data correspond to average values communicated in good faith, but they cannot be considered as a contract document. The company is not responsible for any inappropriate use of the product. **Slight colour differences among several lots are admitted.**



010

SAN MARINO DIS. TOPOS

MARIANO FARRUGIA  
T E S S U T I



www.mfarrugia.com

info@mfarrugia.com

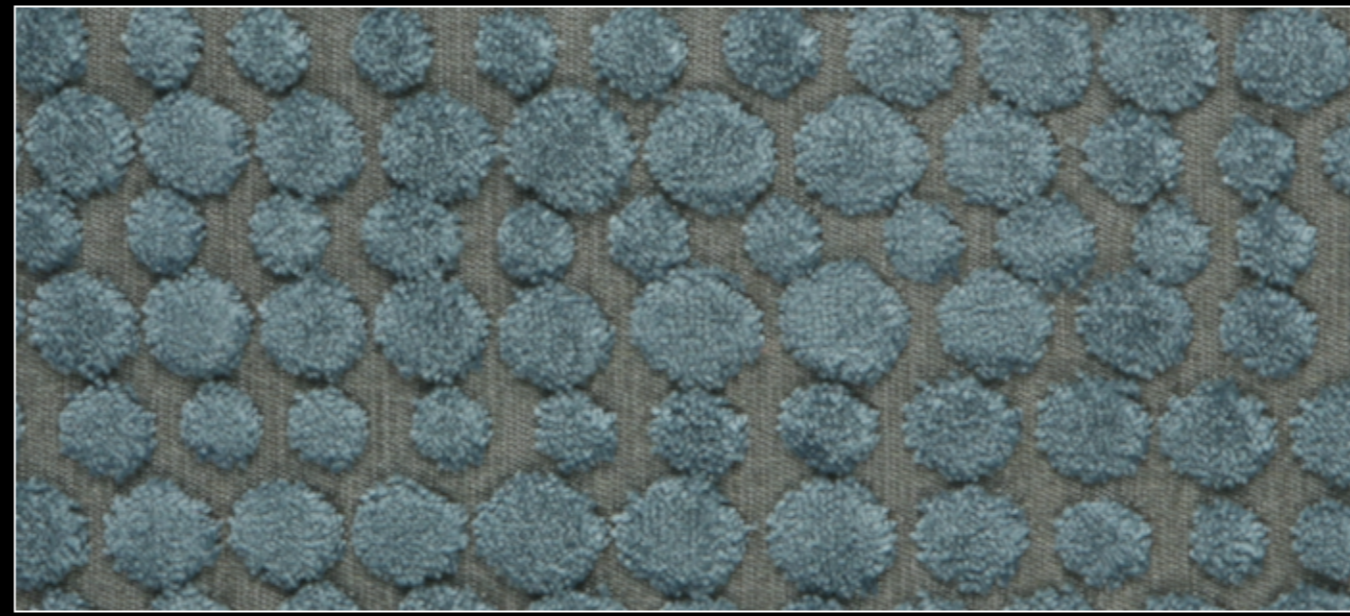
+34 968 75 10 39 FAX +34 968 79 26 72

Polígono Industrial La Herrada C/ Príncipe de Asturias 41 Apartado 452 30510 Yecla Murcia Spain

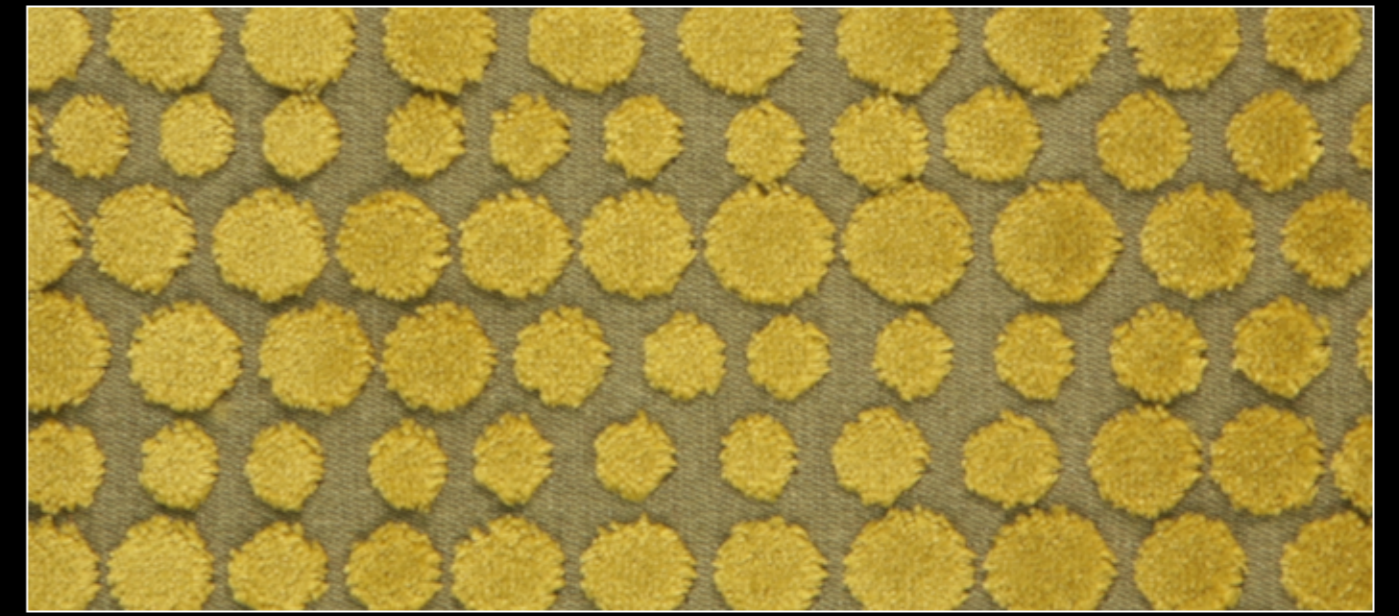
SAN MARINO  
DIS. TOPOS



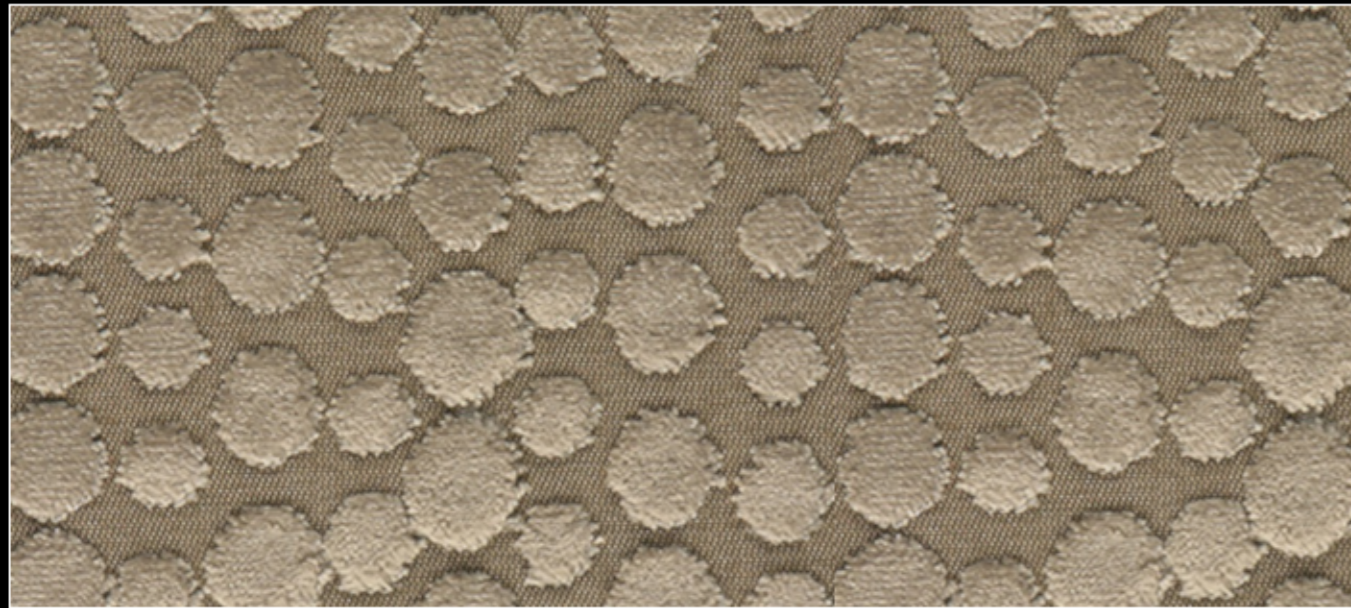
001



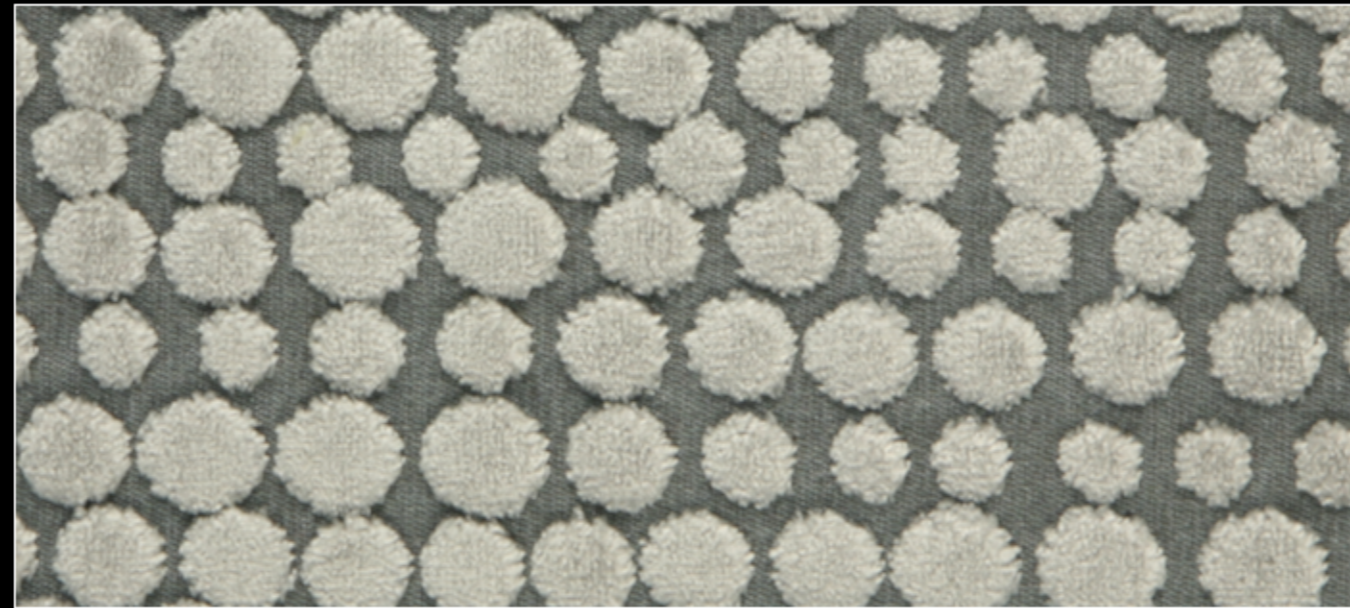
004



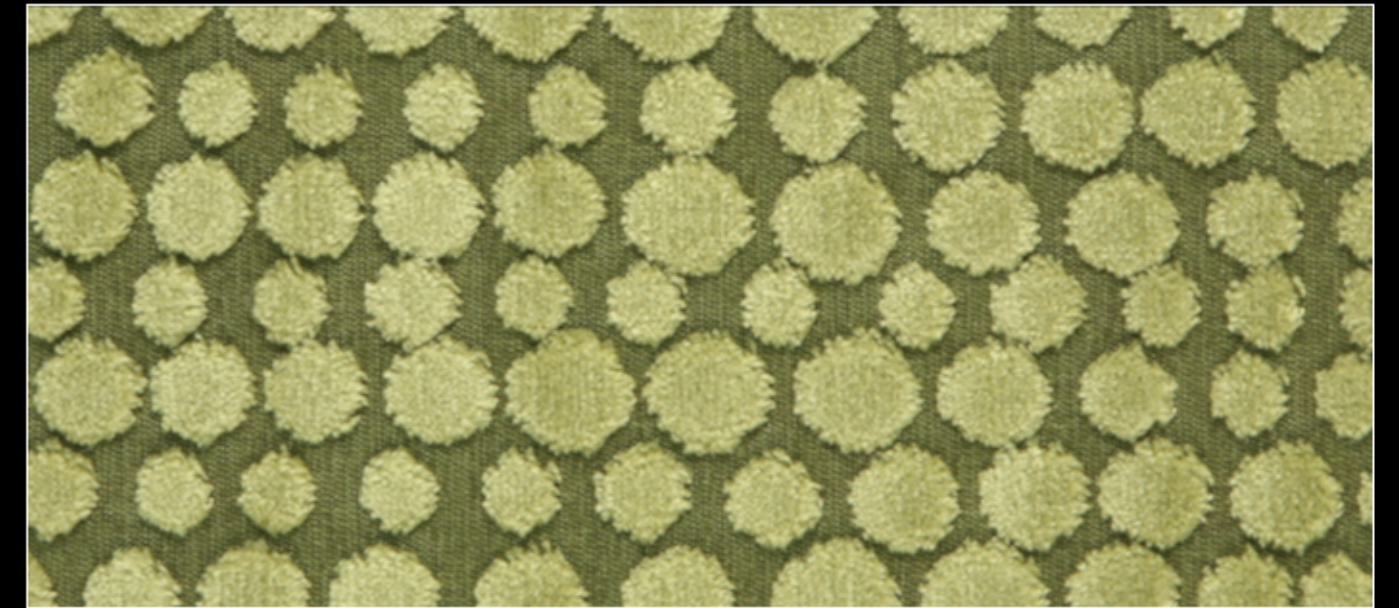
007



002



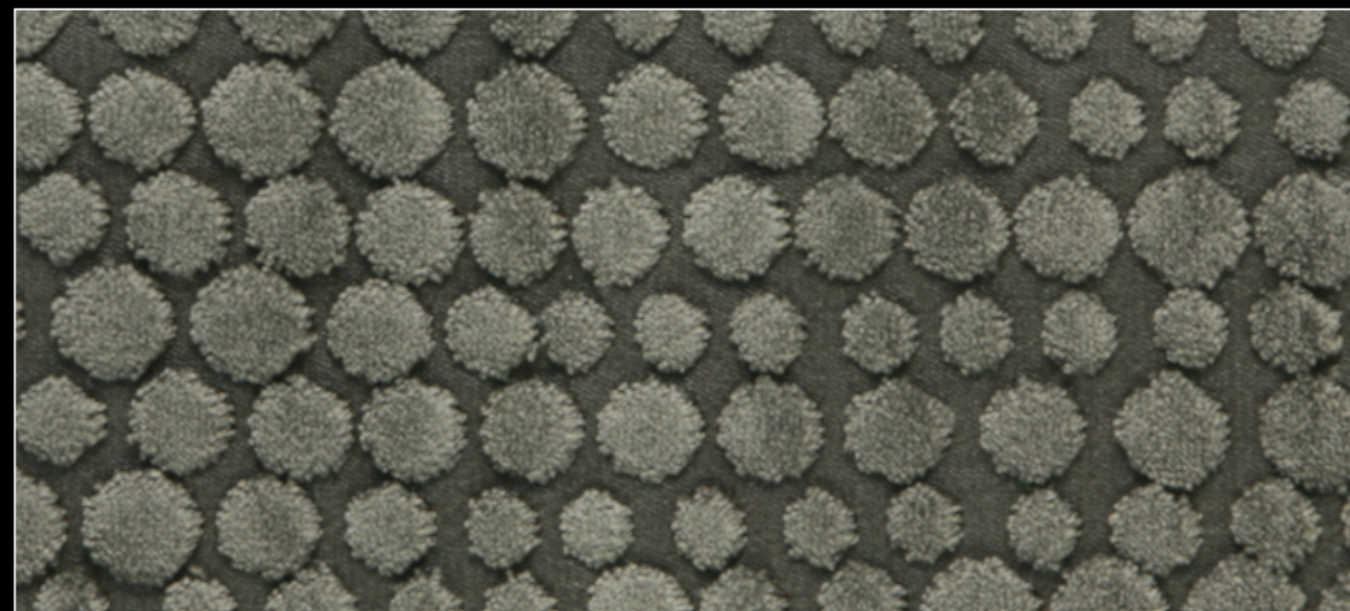
005



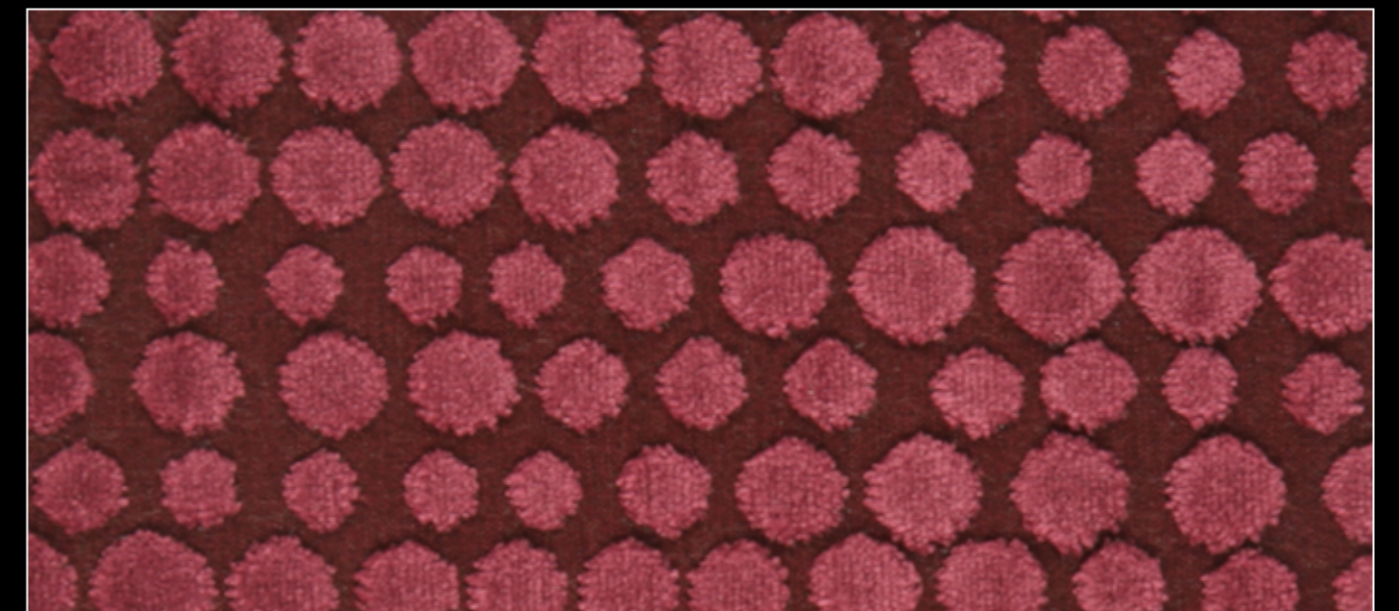
008



003



006



009